



**TATATOOL**

**TATA TOOL CO.,LTD**

Tools & Die Specialist for Metal Stamping

[www.tatatool.com](http://www.tatatool.com)

# 注重品质，打造理想产品 并且使用最新的解决方案

Committed to quality, we create the ideal solutions for the latest needs.

弊公司成立于2009年9月，位于中国华南地区广东省广州市花都区，以汽车用冲压模具的设计与承制作为主营业务。  
本公司专注于产品的品质，通过强化模拟分析，不断提高技术水平，以向客户提供更高的材料利用率、更稳定的生产性为目标。  
主要模具产品：1、4米\*2米PRG级进连续模具；2、3000T以内多工位模具；3、铝镁合金零件模具；4、1180Mpa以内高强度零件模具。

The company was established in September 2009, located in Huadu District, Guangzhou City, Guangdong Province, South China, to the design and production of automotive stamping die as the main business.

We focus on the quality of products, through strengthening simulation analysis, and constantly improve the level of technology, in order to provide customers with higher material utilization, more stable production as the goal.

Stamping die products:

1. 4 m \* 2 m PRG stamping die; 2. 3000T TRF stamping die; 3. Al-Mg Alloy stamping die; 4. 1180Mpa stamping die

## ISO9001 经营理念

让客户满意，实现“Quality(品质)、Delivery(交货期)、Cost(价格)”，成为值得信赖和期待的企业

## ISO9001 Management Philosophy

Satisfy customers, achieve "Quality, Delivery, and Cost", and become a trustworthy and expected enterprise.



APAC 表彰



ISO 9001 认证



Happy表彰





# 工厂参观 / Plant Tour



1 设计部---design team



2 车间现场---Workshop site



3 机加工区---Machining area



4 模具调试区---Die debugging area



5 模具连线调试---Die debugging



6 3D扫描检测---3D laser measurement

## 制品实绩

Experts for Ultra High Tensile Steel,  
Aluminum materials and Hot forming tool

具有丰富的高张力钢板、铝、热成型的模具制作经验

金属冲压件  
Metal Parts





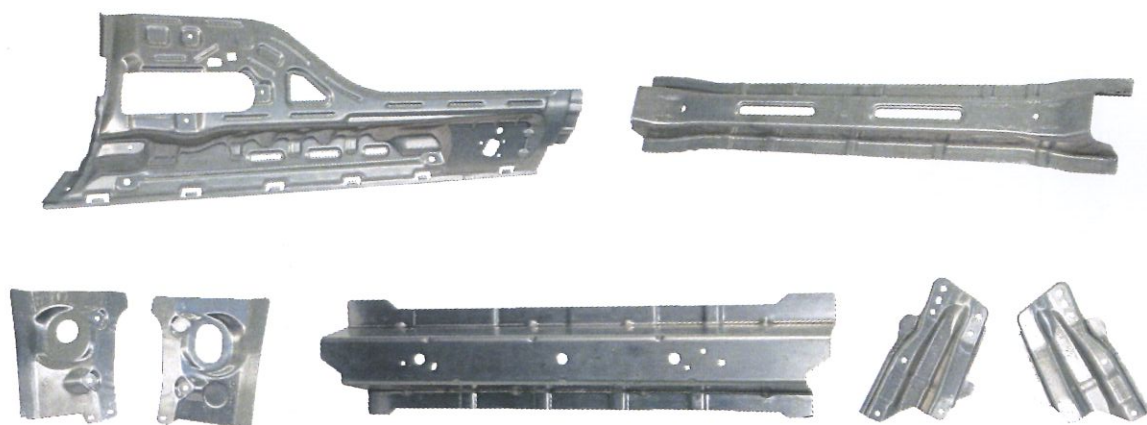
## 热成型冲压件

## Hot Stamping Parts



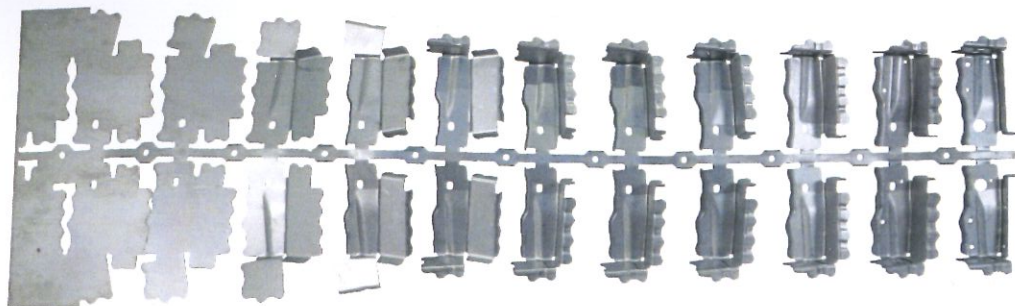
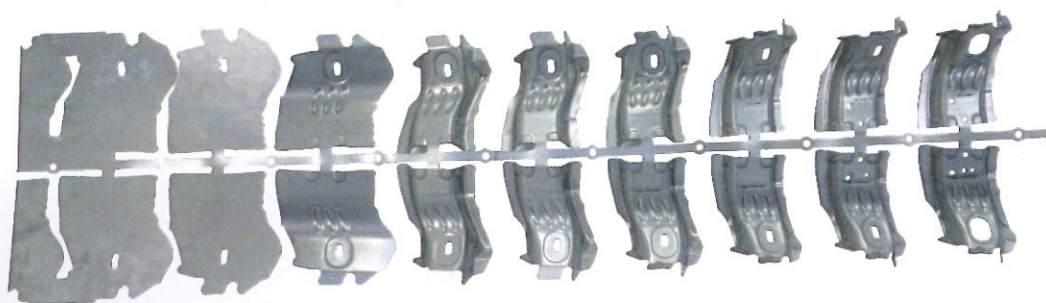
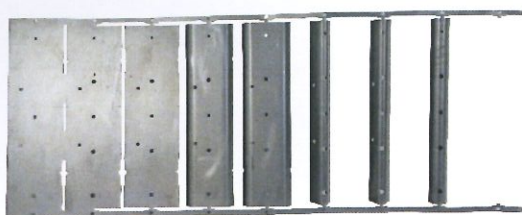
## 铝冲压件

## Al Parts



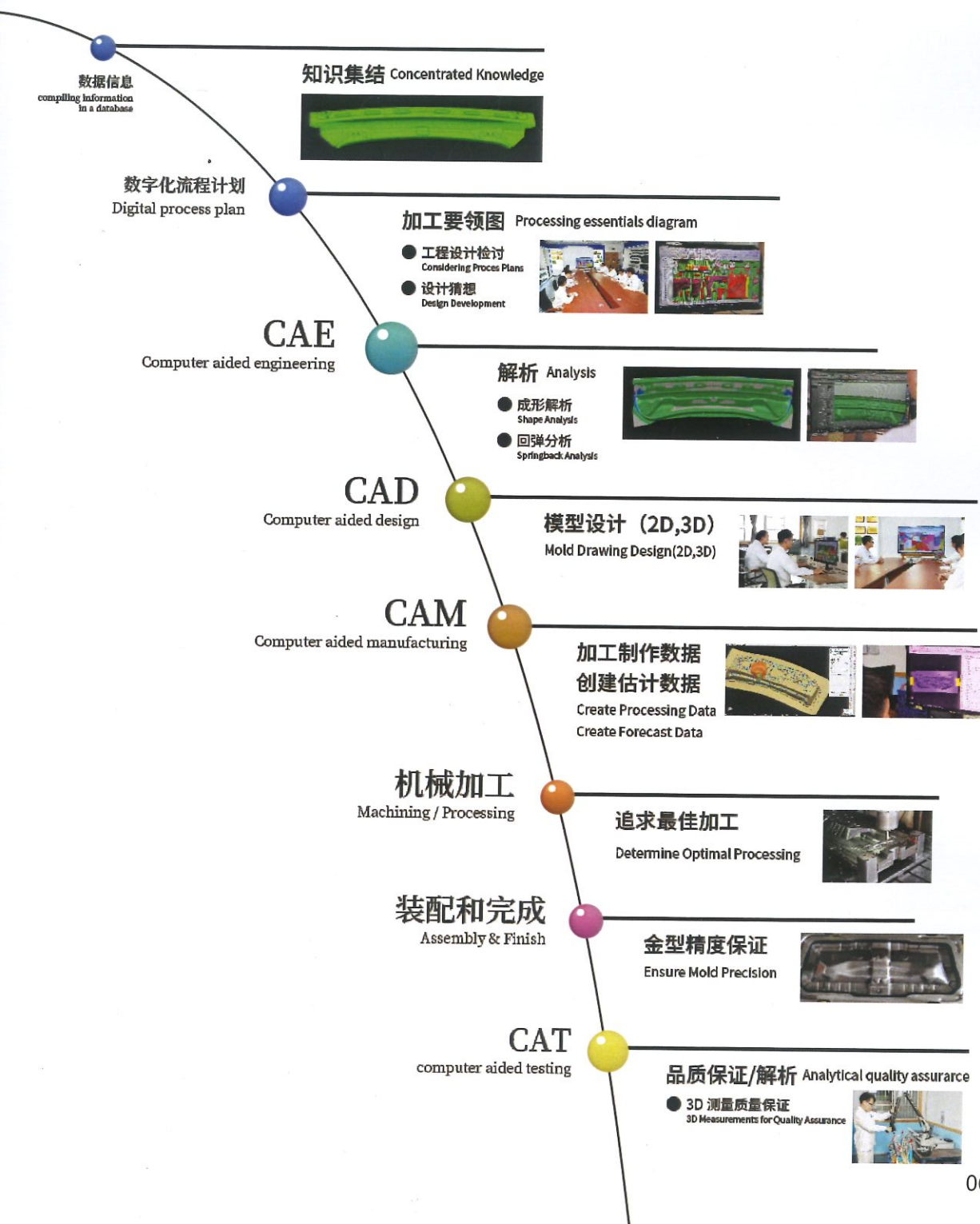
# 料带展示

Strip layouts display

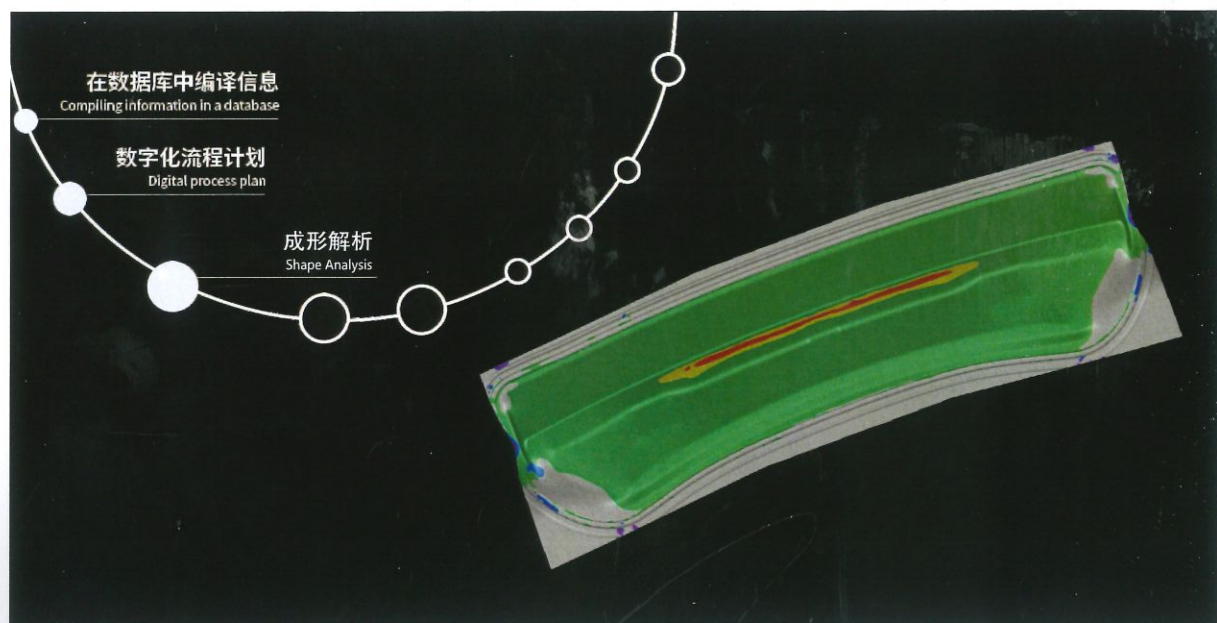


# 数字化流程，模拟技能和专业知识， 将数据与实际机器处理操作进行核对

Digital processes and our analog skills and expertise into our databases, collating the data with actual machine processing operations

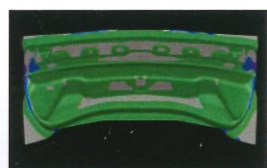




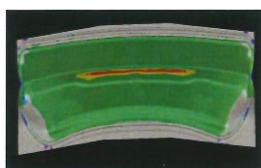


## 通过不断演进的仿真技术而变得更加先进 即刻响应多样化

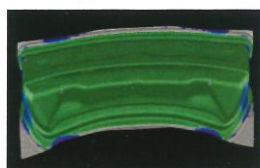
Our constantly evolving simulation technology enables us to respond to increasingly sophisticated and variegated demands immediately.



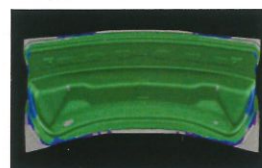
STEP1



STEP2

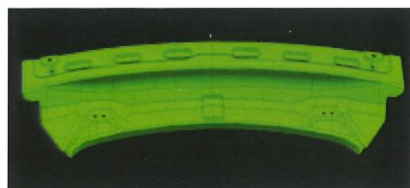


STEP3



STEP4

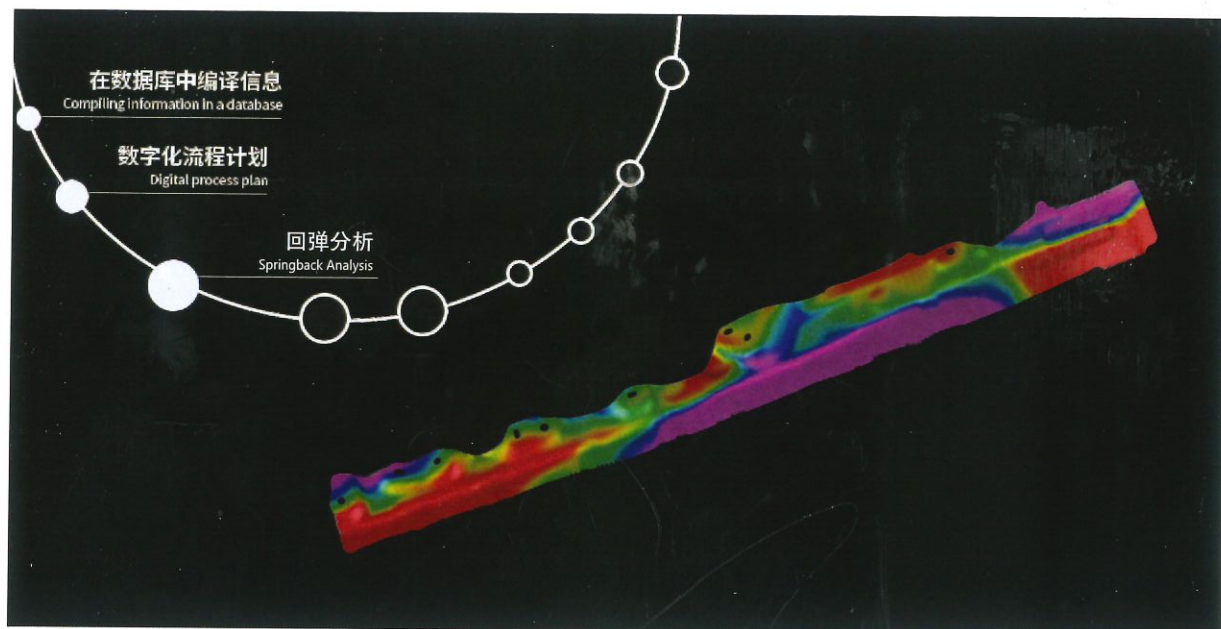
汽车的骨骼零件轻量化和刚性不断进化，与此同时，冲压模具制作工艺也在进行专业的数字化。本公司为了提高产品的完成度，专业的职员讨论最适合的工序，制作独自の「加工要领图」。然后，CAE事先对成形性、塑性加工条件等进行数字解析，直至微小的误差，进行无变形的高精度模拟解析。



As automobile frame components become lighter and more rigid than ever, specialist computerization of mold manufacturing processes is on the increase. To ensure we deliver the best possible products, our specialist staff studies optimal manufacturing processes and creates proprietary Processing Outline Charts. We then use CAE technology to perform meticulously accurate digital analysis and high-precision simulations of shape, plasticity processing requirements, and others.

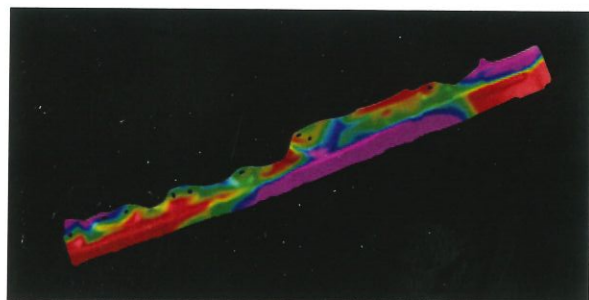






## 回弹分析

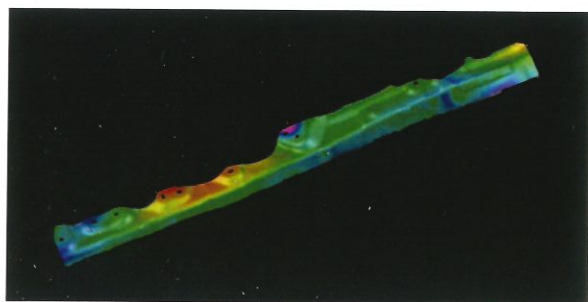
Springback Analysis



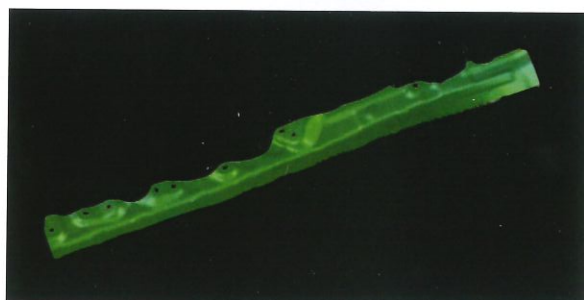
STEP1



STEP2

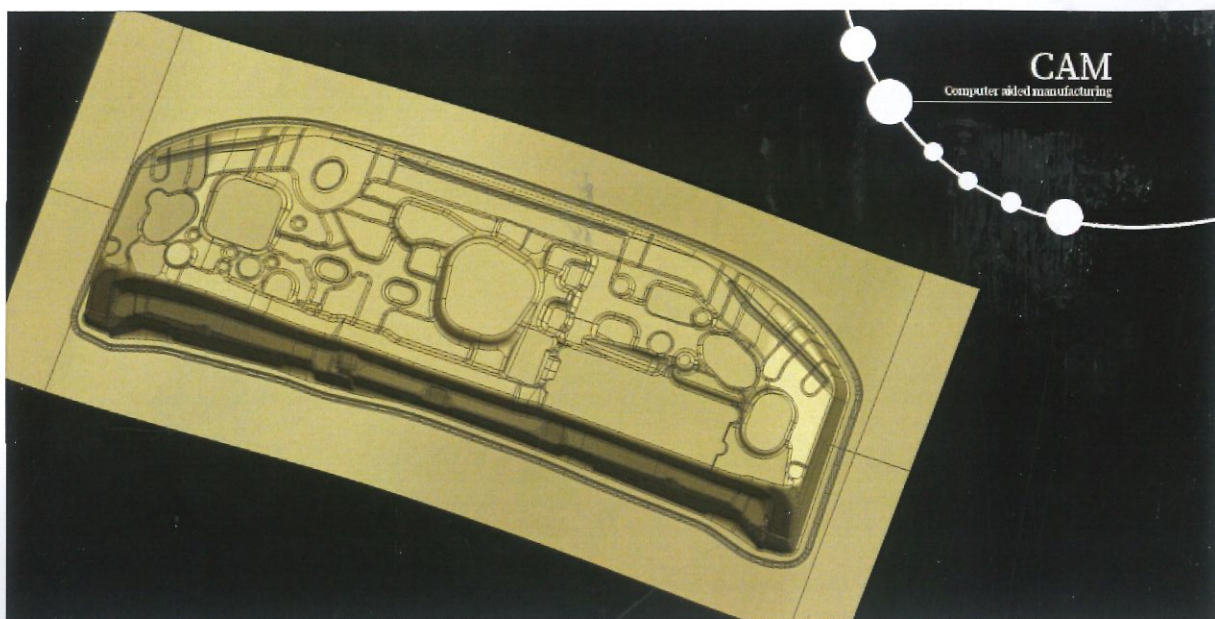


STEP3



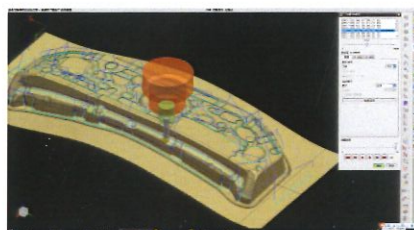
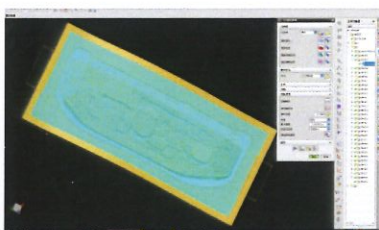
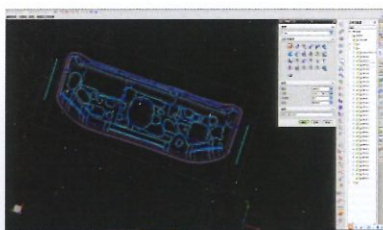
STEP4





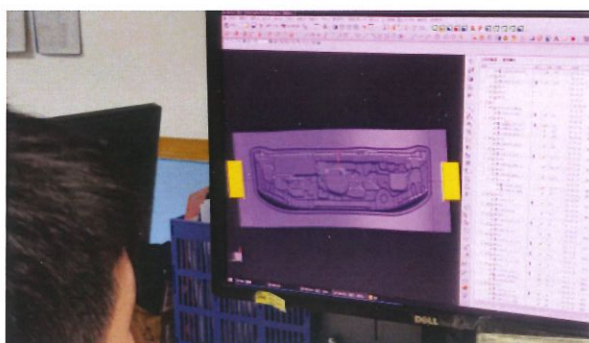
## 使CAD数据对实际应用更加准确 模拟加工操作

Making CAD data even more accurate to real-world applications.  
Simulations model machining operations.

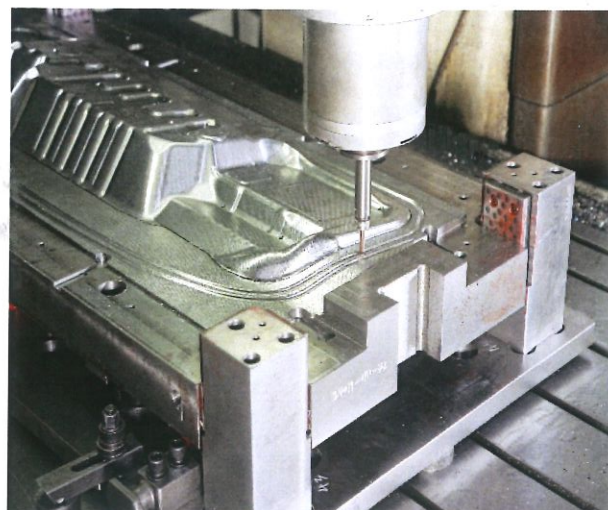


追求模具加工的最前沿加工状态，验证CAD数据·反复对照，可实现加工条件的高效化。通过多边模拟，构建忠实于加工条件且可实现的高精度数据。

We determine optimal mold processing methods, re-collate and re-assess CAD drawings, and seek greater efficiency in meeting processing requirements. Our multi-faceted simulations enable us to construct data that is highly precise, reproducible, and accurate to the processing requirements.





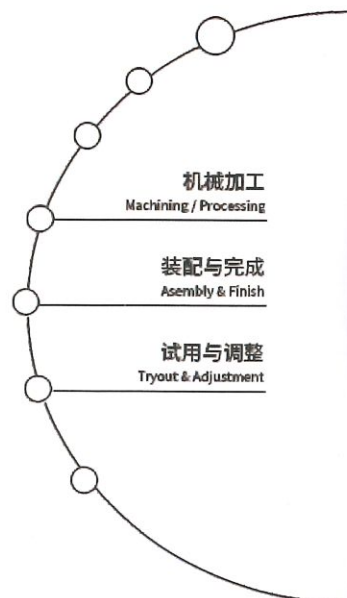
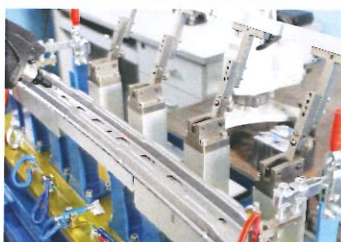


## 加工、调试、检测

### Machining、Tryout and Detection

通过我们的数字流程创建的数据用于在实际生产线上冲压出原型面板，使用CNC加工中心和其他地方的最新设备以及精心挑选的钢铁产品。我们产品的精度并不取决于每个工人的技能。我们的高端系统生产的模具可以统一满足要求的规格。

The data created through our digital processes is used to stamp out prototype panels on the actual production line, using the latest equipment in machine centers and elsewhere and carefully selected steel products. The precision of our products does not rely on the skills of the individual worker. The molds produced in our high-end systems can be made to uniformly meet required specifications.





# TATA TOOL CO.,LTD

Add : No.5-1WEST SIDE JING SANRD,CHINI AREA AUTO  
INDUSTRY ZONE,HUADU,GUANGZHOU

Tel/Fax : 020-86718826

Mobile : 139 2623 1255 ZipCode : 510800

E-mail : liuxueyan@tatatool.com

Website : <http://www.tatatool.com>  
<http://www.tatatool.net>